



What's integrated about Integrated Catchment Management?

Kirsty Blackstock and Simon Langan
email: k.blackstock@macaulay.ac.uk The Macaulay Institute, Aberdeen

Why do we need integrated catchment management?

Integrated Catchment Management, also known as River Basin or Watershed Management, is the means by which water quality and quantity can be managed effectively.

Integrated Catchment Management means joined up thinking – recognising:

- How land management influences what ends up in the rivers, lochs, groundwater and estuaries
- How what people do now will influence our water resources in the future
- How actions at one point in the catchment influence water quality and quantity elsewhere

Thus truly integrated catchment management means sharing experiences and working together.

The **3 Dee Vision**¹ project put these principles into action as demonstrated below.



Integrated Land and Water

The project allowed Scottish Water to go beyond statutory requirements for the Tarland WWTP and install wetlands that both polish the effluent and provide habitat.



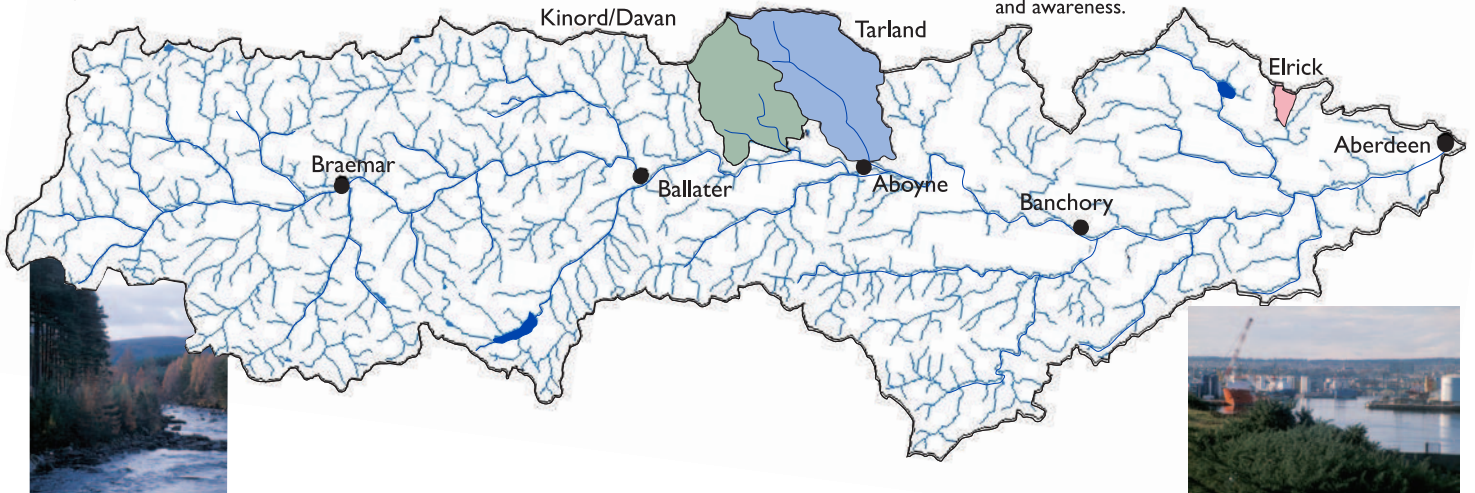
Integrating Decisions

The project involved a partnership between six organisations that allowed them to share risks, pool resources and avoid duplication.



Integrating Different People:

The project involved many local people of all ages through a series of open days, educational activities and site visits. These improved understanding and awareness.



What did we learn?

- Improving water quality and managing water resources requires integration at the catchment scale, over time and between different types of people
- Resources can be deployed more effectively if organisations work together and actions are targeted at the most appropriate actions in the right places. Sometimes, small interventions have powerful cumulative effects
- Ensuring stakeholders (including the local residents) are engaged improves delivery and improves the longevity of a project, particularly where they can see a positive outcome from their involvement
- Good outcomes stem from well run, well resourced processes with committed staff and stakeholders

Looking to the future

The principles of ICM underpin the Europe wide Water Framework Directive, implemented through the Water Environment and Water Services (Scotland) Act in 2003, and due to deliver the first Scotland River Basin Management Plan in 2009. From what we have learned through 3 Dee Vision we can use to develop ICM across Scotland and wider afield. We are already taking the work forward through the development of a River Dee Catchment Management Plan (www.theriverdee.org).